



# Community Indicators Dashboard

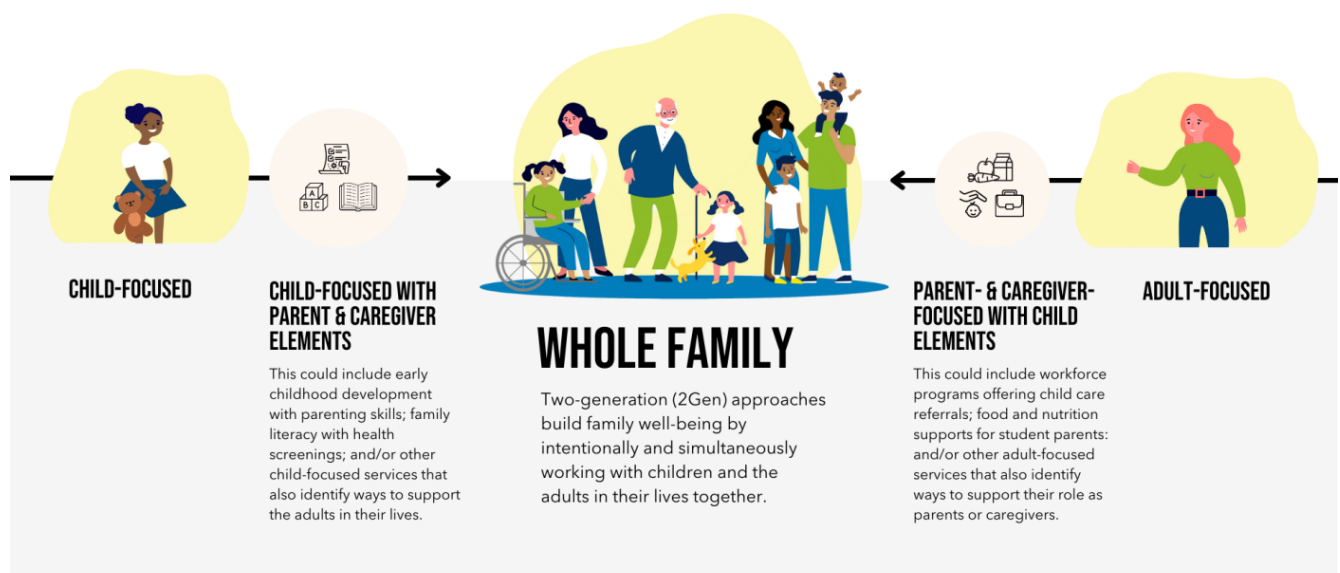
## Community Foundation of Sarasota County

### 2Gen Summit Report - 2024

## About the 2Gen Approach

Two-generation (2Gen) approaches build family wellbeing by intentionally and simultaneously working with children and the adults in their lives together. Strategies that center the whole family as an integrated unit empower families to disrupt intergenerational cycles of poverty and find paths to educational success and economic prosperity that passes from one generation to the next.

### TWO-GENERATION (#2GEN) APPROACHES CENTER WHOLE FAMILIES

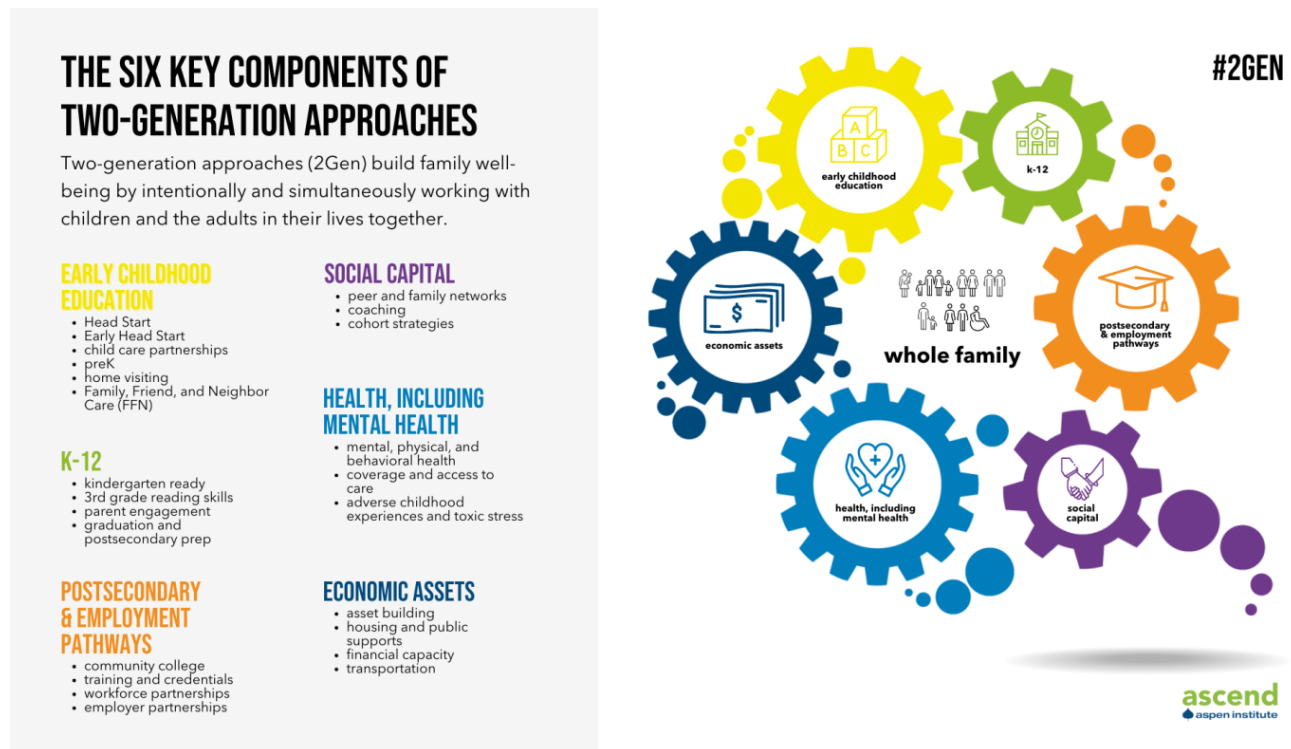


Source: <https://ascend.aspeninstitute.org/2gen-approach/>

---

## 2Gen: Key Components of Two-Generation Approaches

The coordination of equitable access to the systems and structures that underpin social and economic mobility is at the heart of 2Gen strategies. Ultimately, the approach recognizes six key components to improve families' financial stability, social capital, health care, and quality education.



Source: <https://ascend.aspeninstitute.org/2gen-approach/>

---

## Family Wellbeing Indicators Incorporated in The Community Indicators Dashboard

In Fall 2023, Community Foundation of Sarasota County launched a new online tool to discover community trends with intuitive visualizations and mapping tools. [The Community Indicators Dashboard](#)<sup>12</sup> found at [Community Data, Tools and Report](#)<sup>13</sup> is built to demonstrate both areas of need and bright spots, that can inform charitable giving, grantmaking, and equitable policymaking, as well as provide inspiration through promoting data driven suggestions.

The dashboard is designed to be interactive, allowing users to view nearly 50 indicators measuring education, economy, health, and housing at the national and state level, as well as the four-county region the Community Foundation serves - Sarasota, Manatee, Charlotte and DeSoto counties. It also incorporates some family wellbeing indicators recognized by proponents and practitioners of 2Gen approaches, providing a holistic and comprehensive understanding of a community's overall health.

---

## Outlook of Key Components of 2Gen Approaches via

# The Community Indicators Dashboard

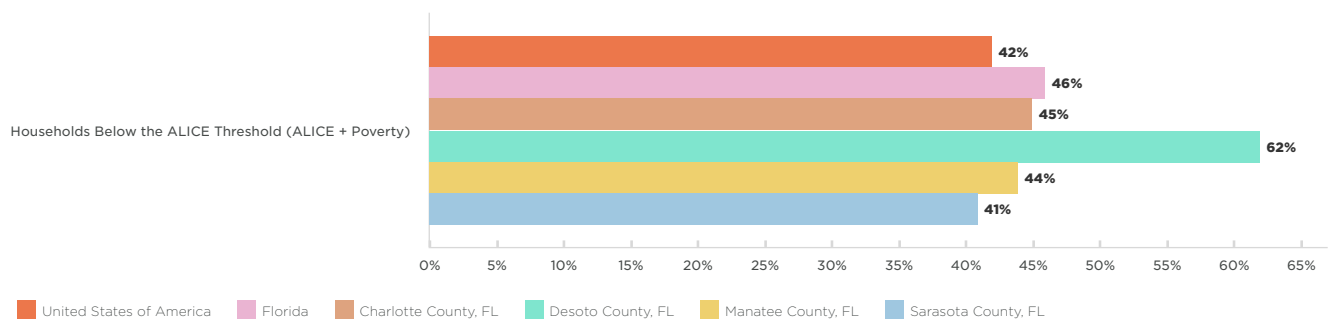
## Economic Assets

A family's wealth is directly related to several aspects of safety and wellbeing, including secure housing, reliable transportation, and access to good health (including healthy foods and fitness opportunities). In consideration of the future, economic security is the foundation of social and financial mobility. A relatively small increase in household income can have a significant, lasting positive impact on the life of a child. A \$3,000 difference in parents' income when their child is young is associated with a 17 percent increase<sup>2</sup> in the child's future earnings.

Economic assets play a crucial role in the 2Gen approach as they contribute to the financial stability and upward mobility of families.

One of the most telling components of a community's economic wellbeing is the percentage of ALICE (Asset-Limited, Income-Constrained, but Employed) individuals living within the community. Indicators from the dashboard below illustrate the percent of families living beneath the ALICE threshold in our four-county service region, along with median home value and rent, homeownership numbers, and the percentage of families receiving SNAP. These indicators guide the development of targeted interventions and help community leaders make informed decisions to break the cycle of poverty and promote economic stability for both adults and children.

## Households Below ALICE Threshold



Source: United for ALICE 2022

## Median Home Value/Rent

Median Home Value	USD
United States of America	\$303,400
Florida	\$325,000
Charlotte County, FL	\$291,000
Desoto County, FL	\$151,500
Manatee County, FL	\$359,800
Sarasota County, FL	\$373,100

Median Home Rent	USD
United States of America	\$1,348
Florida	\$1,564
Charlotte County, FL	\$1,289
Desoto County, FL	\$910
Manatee County, FL	\$1,549
Sarasota County, FL	\$1,715

Sources: US Census Bureau ACS 5-year 2019-2023

# Owner vs Renter Occupied Housing Units

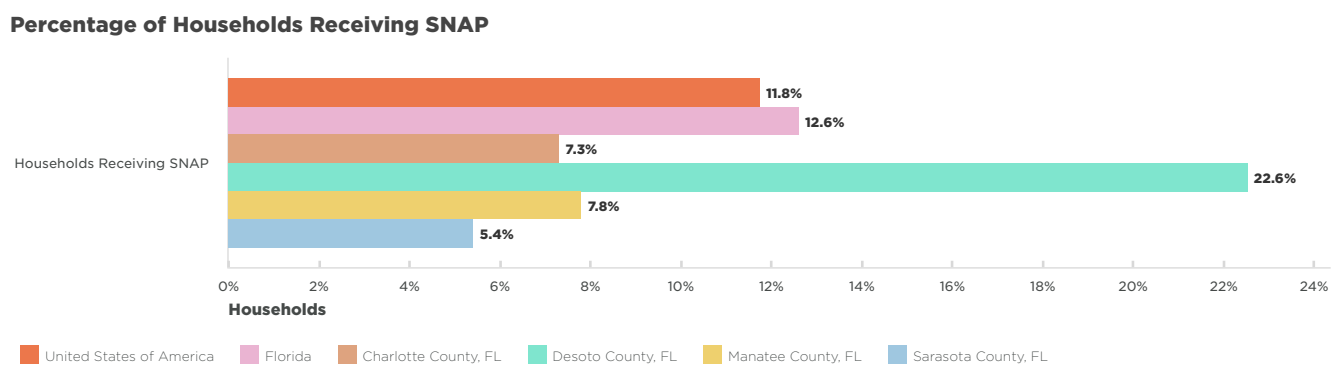
Owner Occupied Housing Units	
United States of America	65%
Florida	67.3%
Charlotte County, FL	83.2%
Desoto County, FL	71.3%
Manatee County, FL	74.7%
Sarasota County, FL	76.3%
Renter Occupied Housing Units	
United States of America	35%
Florida	32.7%
Charlotte County, FL	16.8%
Desoto County, FL	28.7%
Manatee County, FL	25.3%
Sarasota County, FL	23.7%

Sources: US Census Bureau ACS 5-year 2019-2023

# Supplemental Nutrition Assistance Program

Number of Households Receiving SNAP	Households
United States of America	15,004,950
Florida	1,078,978
Charlotte County, FL	6,413
Desoto County, FL	2,855
Manatee County, FL	13,195
Sarasota County, FL	11,171

Sources: US Census Bureau ACS 5-year 2019-2023

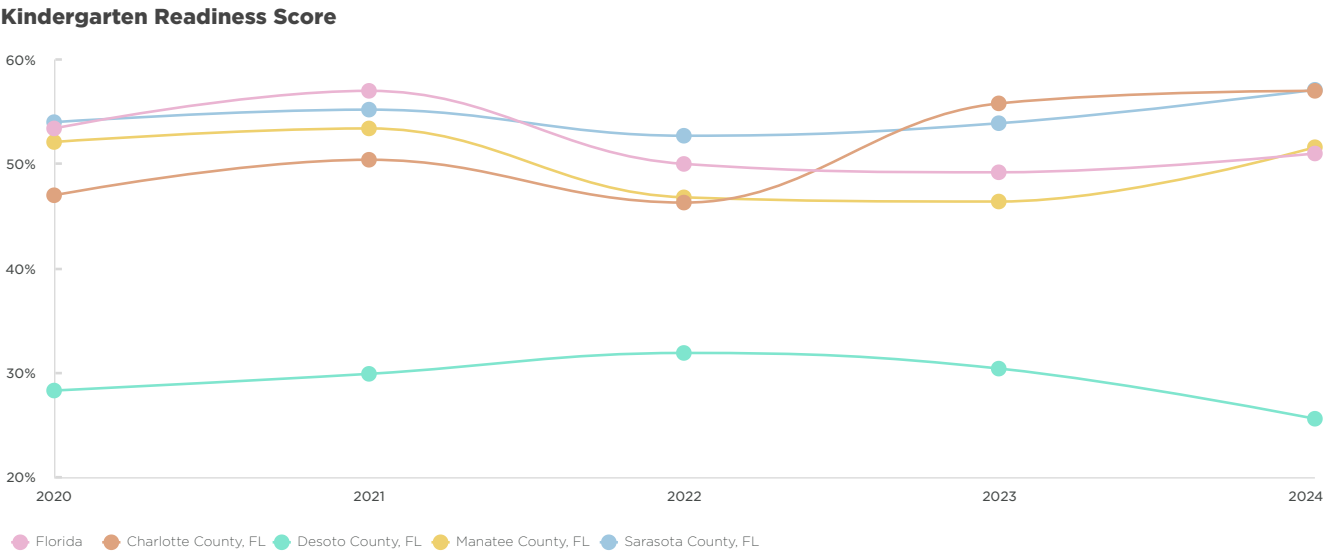


Sources: US Census Bureau ACS 5-year 2019-2023

# Early Childhood Education

It is widely recognized that access to early childhood education opportunities is key to building a foundation of learning and achievement later in life. High-quality child development programs have been shown to have a positive long-term impact in many areas of a person's life, including education, health, social behaviors, and employment. Accounting for

the increased school and career achievement as well as reduced social costs, investments in high-quality early education yield a 13% per year <sup>↗</sup> return on investment.



The line chart compares the percentage of kindergarten students who scored over 500 on the Florida Kindergarten Readiness Screener, the minimum score indicating a student’s readiness for kindergarten, for Florida and the four counties from 2017 to 2022.

From 2017-2021, screening for school readiness was done with the Florida Kindergarten Readiness Screener (FLKRS). In 2022-2023, Florida adopted a statewide Coordinated Screening and Progress Monitoring System known as the Florida Assessment of Student Thinking (FAST) Star Early Literacy. FAST Star Early Literacy now serves as the kindergarten screener. A FAST score of 690 is equivalent to a 500 on the FLKRS.

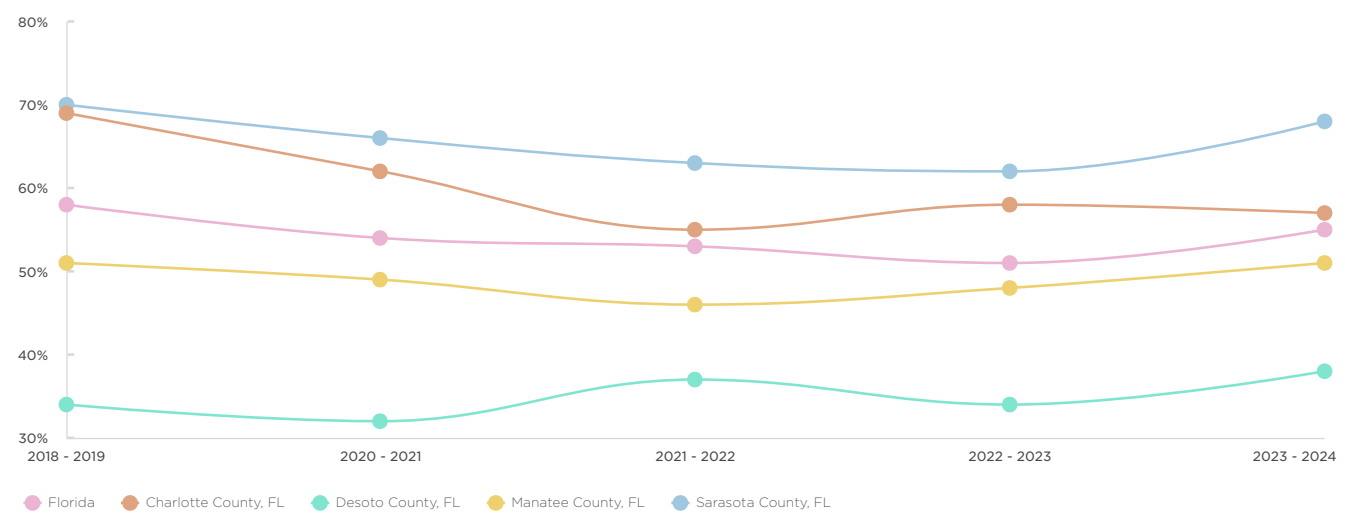
## K-12

Schools serve as community anchors and have the potential to provide strong platforms for both children and adults in their lives to thrive. Traditionally, schools focus on student achievement, yet an approach that considers whole family dynamics and intentionally focuses on the adults in students’ lives may yield powerful results.

From early elementary grade-level reading to college entrance exam participation and scores, K-12 metrics serve as critical indicators to measure an individual’s prospects for lifelong stability and wellbeing. Regularly monitoring these indicators allows program administrators to identify areas of success and areas that may require adjustment, leading to continuous improvement in the implementation of the 2Gen Approach.

Education Indicators <sup>↗</sup> contribute significantly to a comprehensive assessment of any community, as education intersects with community economy, health, and provision of quality services. While several Education Indicators can be useful tools in gauging a community’s overall educational progress, the collection of information below, which examines third-grade reading proficiency, eighth-grade mathematics scores, and high school graduation rates, depicts a continuum of educational outcomes that begins in the earliest years of a child’s educational journey.

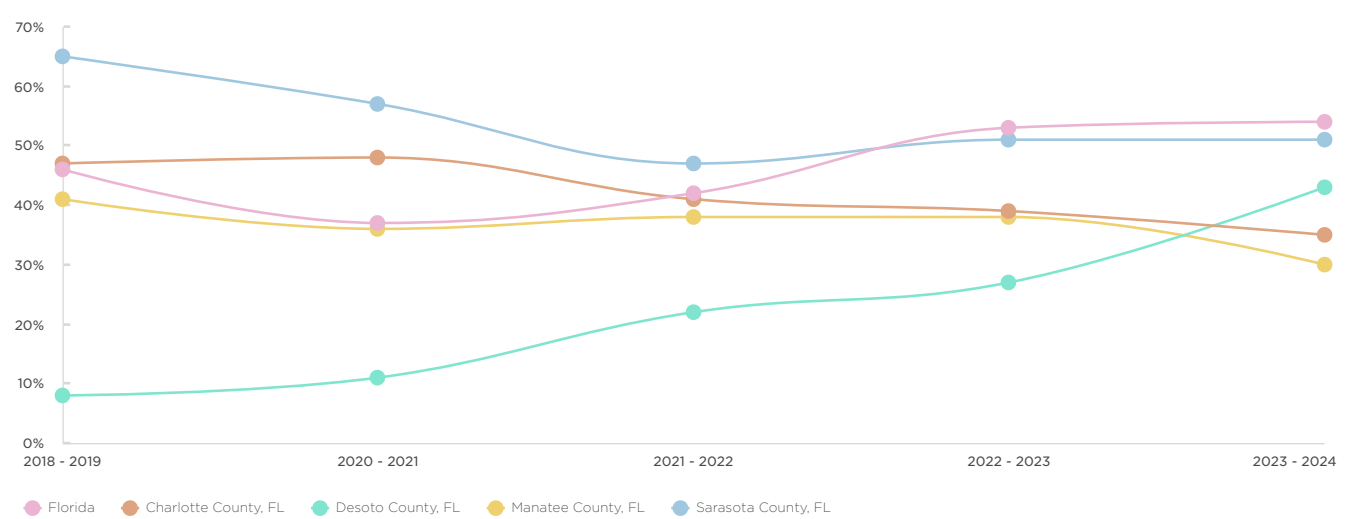
# Third Grade Reading Assessment - Level 3 and Above



Source: Florida Department of Education

The line chart visualizes the percentage of third grade students' performance at level 3 and above in English Language Arts - FS (2018-2021) and English Language Arts - B.E.S.T (2022-2024) for Florida and the four-counties from 2018 to 2024.

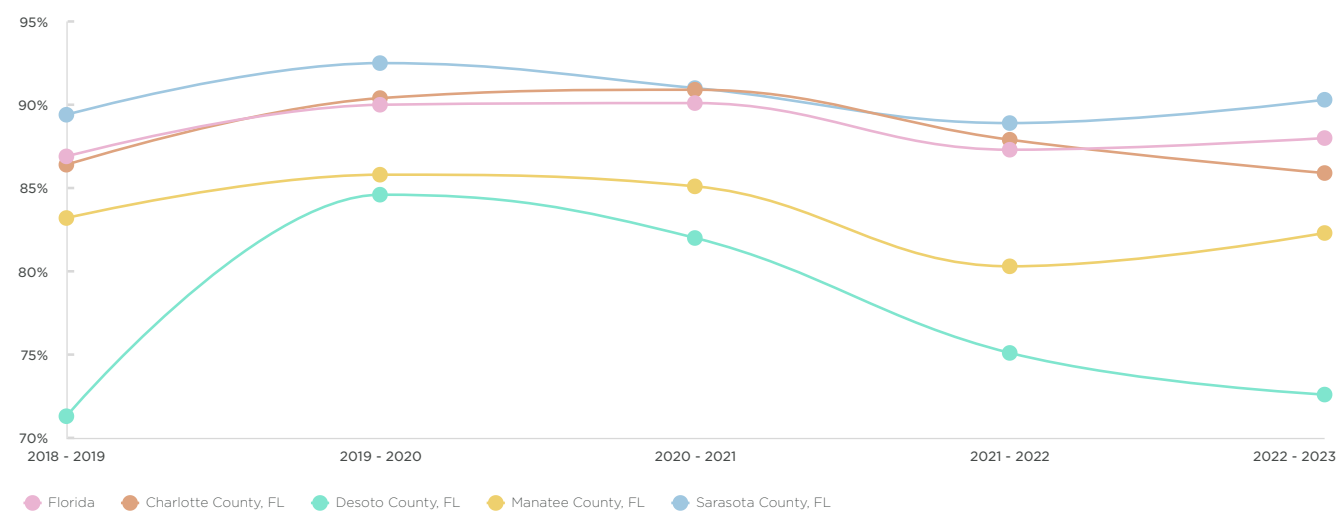
# Eighth Grade Mathematics Assessment - Level 3 and Above



Source: Florida Department of Education

The line chart visualizes the percentage of eighth grade students' performance at level 3 and above in Mathematics - FS (2018-2021) and Mathematics - B.E.S.T (2022-2024) for Florida and the four-counties from 2018 to 2024.

# High School Graduation



Source: Florida Department of Education

The line chart visualizes the percentage of students who graduate high school within four years for Florida and the four-counties from 2018 to 2023.

## Postsecondary and Employment Pathways

A community's economic development is contingent upon the educational attainment of its workforce. More than ever, careers of today demand skills learned and developed through education, and highly educated communities may attract new social, cultural, and economic opportunities that further fuel the economy.

Not only are parents who complete a college degree likely to [double their incomes](#)<sup>2</sup>, but a parent's or caregiver's level of educational attainment is also a strong predictor of a child's success. A focus on postsecondary pathways is a vital component of 2Gen strategies, as opportunities to develop workforce skills and gain credentials for lucrative employment empower adults to attain economic stability.

Some of the indicators presented in this collection from the dashboard are Educational Attainment, Postsecondary Enrollment and Population Below Poverty Level and Employed.

# Percent High School/College Educated

Percent High School Educated	
United States of America	89.4%
Florida	89.6%
Charlotte County, FL	92.2%
Desoto County, FL	73%
Manatee County, FL	91%
Sarasota County, FL	94.4%
Percent College Educated	
United States of America	35%
Florida	33.2%
Charlotte County, FL	25.3%
Desoto County, FL	11%
Manatee County, FL	34.3%
Sarasota County, FL	39.7%

Sources: US Census Bureau ACS 5-year 2019-2023

# Postsecondary Enrollment

Enrolled in Postsecondary School	
United States of America	27.3%
Florida	28.6%
Charlotte County, FL	24.9%
Desoto County, FL	13.1%
Manatee County, FL	22.5%
Sarasota County, FL	25.3%

Source: US Census Bureau ACS 5-year 2018-2022

# Population Age 16 and Over: Below Poverty Level and Employed

Below Poverty Level and Employed	
United States of America	30%
Florida	28.2%
Charlotte County, FL	21.4%
Desoto County, FL	24.5%
Manatee County, FL	27.9%
Sarasota County, FL	24.8%

Source: US Census Bureau ACS 5-year 2018-2022

# Social Capital

Once a concept shrouded in enigma, social capital accounts for a person’s connections to other people, information, and opportunities to give and receive support. Social capital enables families to engage in opportunities that might otherwise be inaccessible. Social capital, which ultimately comes down to peer support, manifests in many ways



otherwise be inaccessible. Social capital, which ultimately comes down to peer support, manifests in many ways, including building community among some or all of the following:

- Family, friends and neighbors
- Community and faith-based organizations
- School and workplace programs designed to develop leadership skills

Reliant upon trusting relationships with other humans, social capital might also include connections with case managers or career coaches as well as those with mental health providers.

Social Capital can be built into existing efforts by building trust among clients, developing opportunities for meaningful engagement, and fostering connections to link and bridge networks between the community.

As a component that is typically measured using qualitative methods, social capital isn't regularly captured as hard data, and doesn't fall under the sections of the Community Indicators Dashboard. Social capital is, however, a component that organizations can and do measure using tools such as interviews, surveys, and respondent journaling.

Below are resources for understanding the complex concept of social capital, as well as identifying when and how it can be measured, and examining regions "rich" in this unique capital versus those regions that have much to gain in this area.

**Tools for strengthening 2Gen Approaches:**

[Next Steps for Rigorous Research on Two-Generation Approaches \(NS2G\)](#)<sup>↗</sup>

**Case Study by Ascend at the Aspen Institute:**

[Parent Success Program](#)<sup>↗</sup>

**Measuring Social Capital in Human Services Program:**

[Social Capital Measurement Brief](#)<sup>↗</sup>

**The Social Capital Atlas:**

[Social Capital Atlas](#)<sup>↗</sup>

**Measuring Social Capital:**

[Can we tell if some places are richer in social capital than others](#)<sup>↗</sup>

---

## Health, Including Mental Health

Health—both physical and mental—has an enormous impact on an individual's and a family's ability to thrive. Illness can impede an adult's ability to work, or to do work well, and children who endure health issues often face tangential difficulties with school and social wellbeing. Poor health can underscore or exacerbate a family's inability to gain a foothold to prosperity and overall wellbeing.

There are several ways to evaluate access to quality healthcare as well as identify barriers and opportunities for increasing the overall health and wellbeing of children, caregivers, and communities.

Some components that illustrate accessibility to quality healthcare, as well as shine a light on opportunities for increased focus or dedication of resources, are within the Community Indicators Dashboard.

The selection below includes components of [Health](#)<sup>↗</sup> that demonstrate access to services, as well as metrics of health among adults and youth.

# Population Age 26 and Over without Health Insurance Coverage By Educational Attainment

People Age 26 and Over with Less than High School Diploma without Health Insurance	
United States of America	21.6%
Florida	24.3%
Charlotte County, FL	15.3%
Desoto County, FL	35.4%
Manatee County, FL	30.3%
Sarasota County, FL	18.9%
People Age 26 and Over with High School Degree without Health Insurance	
United States of America	12.1%
Florida	17%
Charlotte County, FL	13.7%
Desoto County, FL	17.4%
Manatee County, FL	16.3%
Sarasota County, FL	15%
People Age 26 and Over with Some College or Associate’s Degree without Health Insurance	
United States of America	8.2%
Florida	11.7%
Charlotte County, FL	9.2%
Desoto County, FL	14.2%
Manatee County, FL	9.8%
Sarasota County, FL	9.3%
People Age 26 and Over with Bachelor’s or Higher Degree without Health Insurance	
United States of America	3.8%
Florida	6.5%
Charlotte County, FL	4.5%
Desoto County, FL	8.9%
Manatee County, FL	5%
Sarasota County, FL	3.9%

Source: US Census Bureau ACS 5-year 2018-2022

# Students Who Have Felt Depressed or Sad on Most Days

Students Who Have Felt Depressed or Sad on Most Days (Middle/High School Students)	Percent
Florida	47.3%
Charlotte County, FL	45.5%
Desoto County, FL	38.6%
Manatee County, FL	43.6%
Sarasota County, FL	48.6%

Source: Florida Department of Health 2022

# Hospitalizations from Mental Disorders

Hospitalizations from Mental Disorders - Age 18 and Under		Rate Per 100,000 Population
Florida		728.5
Charlotte County, FL		184.6
Desoto County, FL		240
Manatee County, FL		527.6
Sarasota County, FL		1,371.9

Source: Florida Department of Health 2021

## Takeaways

- Each Indicator intersects with the six key areas necessary to promote family wellbeing, but by definition each depicts one thread of an entire tapestry. The data must be considered comprehensively, as understanding areas of strength and areas of need requires examination of overlapping trends.
- Reliable data in its aggregate offers big-picture clarity required to formulate strategies; however, understanding these averages represent pockets of extremes is helpful. For instance, while 52 percent of students in Sarasota County Public Schools are eligible for Free and Reduced-Price Lunch, that percentage climbs to above 90 in several of the county’s Title 1 schools.
- While 2Gen approaches require systemic change that empower the broadest population, it’s critical to not lose sight of individual experiences; one child born into poverty who inherits the poor quality of life that the birth circumstance creates will face compounded stress, hard decisions, and an uphill journey throughout life if no interventions are made.
- When adopted by a community, a 2Gen approach, investing simultaneously in a child and their caregiver, requires systems to work in tandem to support the family unit holistically. A multiplier effect takes place when systems embrace the whole family – simultaneously. This is key to sustainability.
- The imagery depicted in Ascend’s gear graphic illustrates how critical it is that these six components work in combination with one another, providing the tools and supports families need to be successful. When individuals and families harness these supports, the potential exists to not only change their trajectory, but to directly impact the wellbeing and strength of a community.
- Families are diverse and require approaches to their wellbeing to reflect their makeup and structure. Recognizing families as they define themselves is critical in innovating and delivering quality support that enables all people to reach their full potential.
- Critical to the success of a 2Gen strategy is “lived expertise” and the voices of the people served -- a holistic practice requires the recipients to be involved in the decisions.
- Solutions should arise out of inclusive dialogue, reviews of best practices, and collaborative input. These solutions should be tested and then expanded to greater scale, ultimately informing program and policy change.

